

Secure communications network

In Finland, the current security regulations for communications networks apply to every network component, and they steer the design and implementation of networks.

The non-critical components of communications networks are the user's device, modem, radio access network, local and wide area networks, and the interfaces between them.

The critical components of the communications network are considered to be the core of the network, especially the components that are essential in routing and managing the network and the traffic passing through it.

The critical components of communication networks ensure the availability of services and the confidentiality of communications, as well as information security on the network as a whole.

Phones and other mobile devices use a **radio network** to contact base stations.

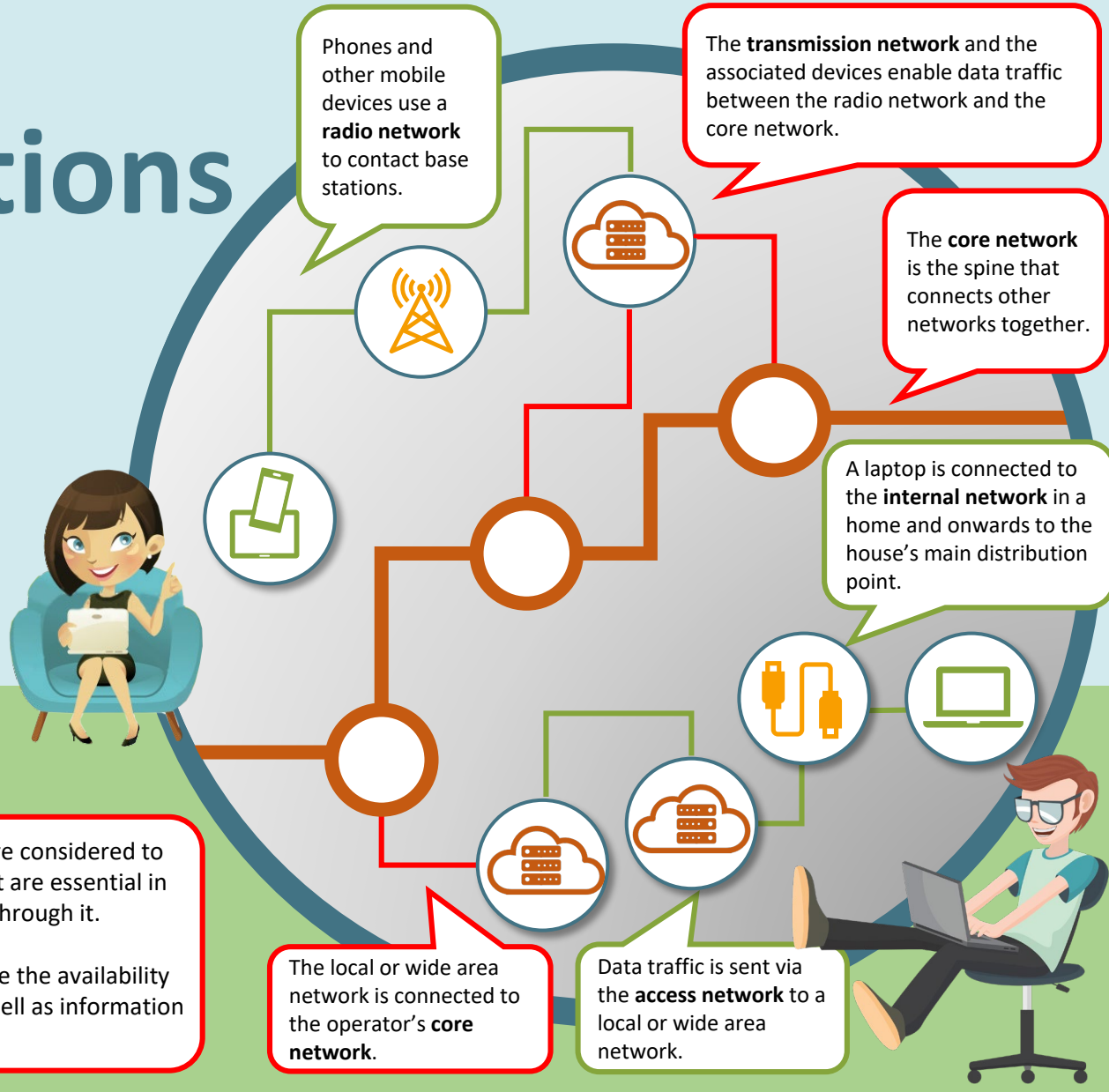
The **transmission network** and the associated devices enable data traffic between the radio network and the core network.

The **core network** is the spine that connects other networks together.

A laptop is connected to the **internal network** in a home and onwards to the house's main distribution point.

The local or wide area network is connected to the operator's **core network**.

Data traffic is sent via the **access network** to a local or wide area network.



#telecommunications #network #infrastructure #cybersecurity

